



Clinical Patient Management Exam – Prosthetics

Tools & Supplies

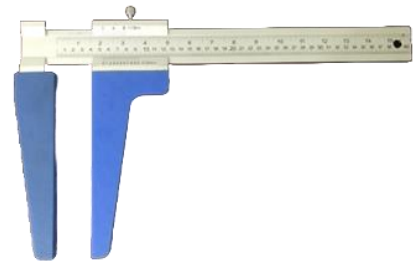
All candidates will be required to utilize the supplies, tools and measurement forms provided by ABC. Do not bring your own tools. The only item(s) you will need to bring are writing materials (pens and pencils).

ABC will provide all of the tools and supplies necessary for the exam, including the supplies required to:

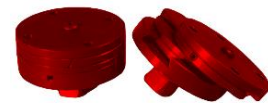
- Evaluate and take measurements of a transtibial patient to provide a prescription recommendation as well as complete a dynamic alignment task and
- Evaluate and take measurements of a transfemoral patient to provide a prescription recommendation.

The tools and supplies that will be available include the following:

- 4 mm Allen wrench
- 5 mm Allen wrench
- Plumb bob
- M/L gauge
- Tape measure
- Exam gloves
- Goniometer
- Transtibial length gauge
- Transfemoral measurement device (AP / length gauge)
- Fillauer A-P/M-L slide unit (#124141)



Exam ML Gauge



Fillauer A-P/M-L slide unit

We recommend that you familiarize yourself with the tools and supplies listed above as you will not be able to use your own tools and supplies.